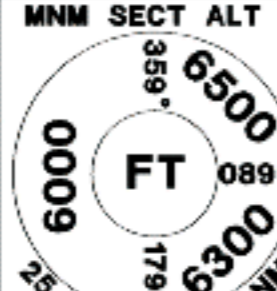
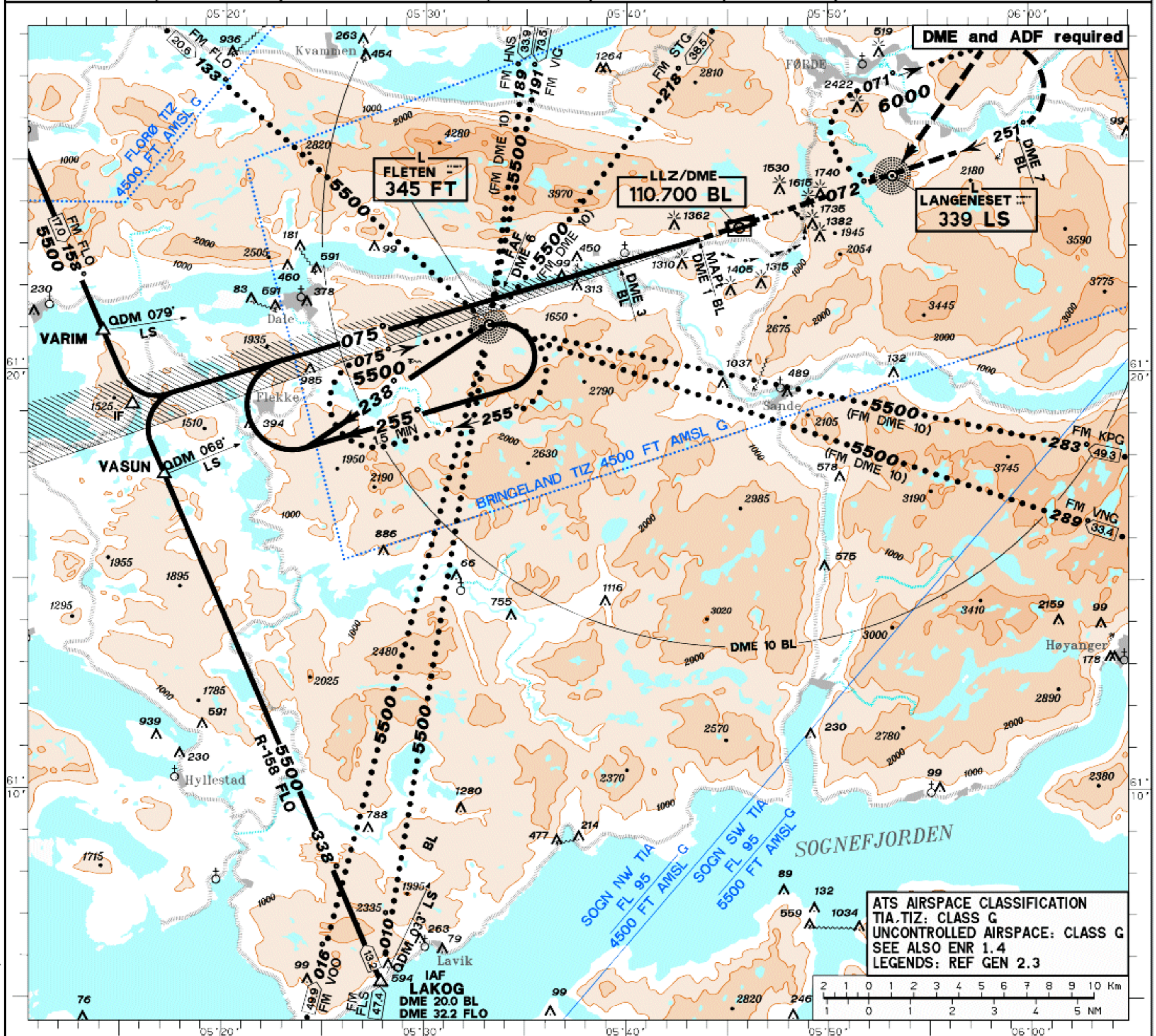


<b>INSTRUMENT APPROACH CHART-ICAO 1:275000</b>	MNM SECT ALT 	HGT RELATED TO THR 07 ELEV 1034 FT. CIRCLING HGT RELATED TO AD ELEV 1046 FT. ALTITUDE, ELEVATION AND HGT IN FT. BEARINGS ARE MAG.	AFIS 118.450	APP -	VDF 118.450	<b>FØRDE BRINGELAND NORWAY</b> <b>LLZ RWY 07</b>
			TA 6000	VAR 1° W (2005)		



**NO GLIDE PATH**

NOTE: LLZ RWY 07 NOT TO BE USED OUTSIDE 10° ON EITHER SIDE OF LLZ FRONT COURSE.

\* MNM MISSED APCH CLIMB GRADIENT

	NM	14	13	12	11	10	9	8	7	6	5	4	3	2	1	0	1	2	3	4	5	6	7	8	9	10	NM
CAT OF ACFT	A	B	C	D																							
OCA (H)	2.5% *	1780 (750)	1810 (780)	-																							
STRAIGHT-IN	3.3% *	1520 (490)	1560 (520)	-																							
CIRCLING	-	2040 (1000)	2960 (1920)	-																							
<b>NOTE: CIRCLING SOUTH OF AD ONLY.</b>																											

	NM	5	4	3	2	1	0	1	2	3	4	5	6	7	8	9	10	NM
FINAL APPROACH	DISTANCE FAF-MAPt: 5 NM - TIMING NOT AUTH FOR DEFINING MAPt																	
SPEED	KT	60	90	120	150	180												
TIME	MIN: SEC	5:00	3:20	2:30	2:00	1:36												
RATE OF DESCENT	FT/MIN	420	630	840	1050	1250												
DIST DME	-	6	5	4	3	2												
ALT (HGT)	-	3500 (2470)	3080 (2050)	2660 (1630)	2240 (1210)	1820 (790)												

CHANGES: BRINGELAND AND FLORØ TIZ, FLORØ TIA REMOVED, SOGN NW TIA AND SOGN SW TIA NEW.

Permittelse om LE2 - 2345 - Norwegisk Karting Autoritet