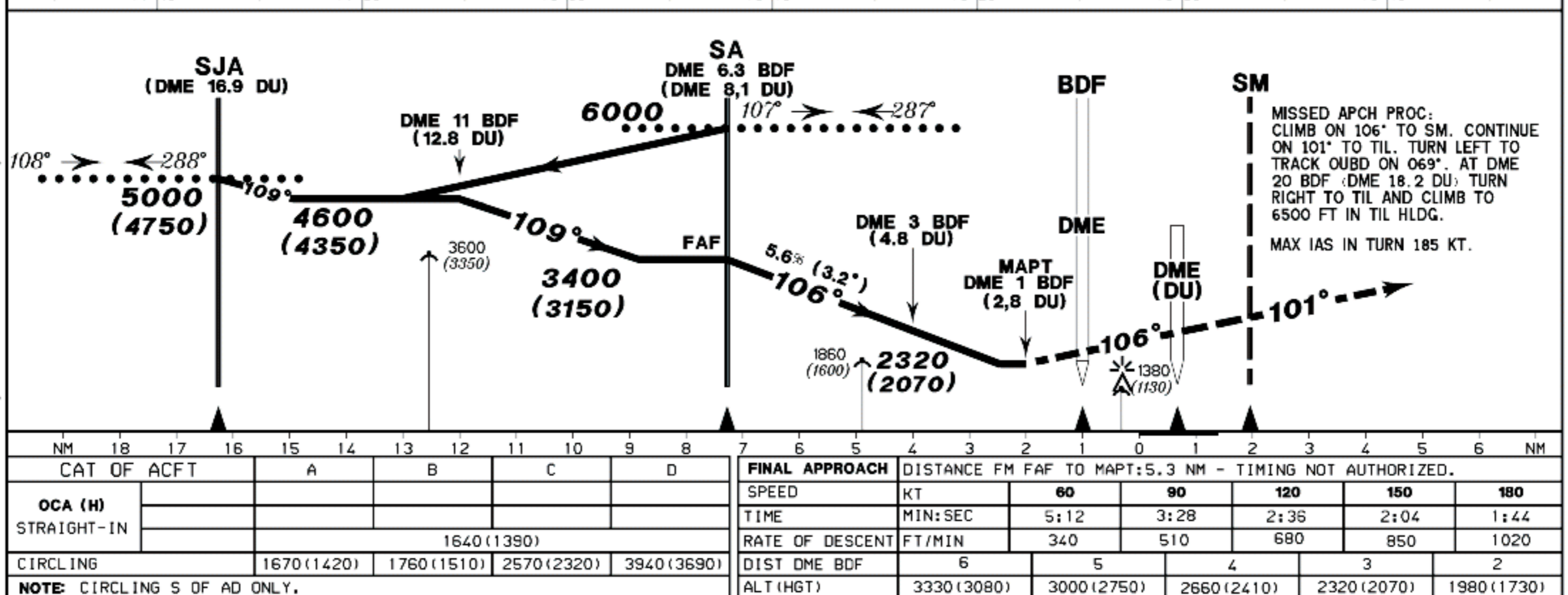
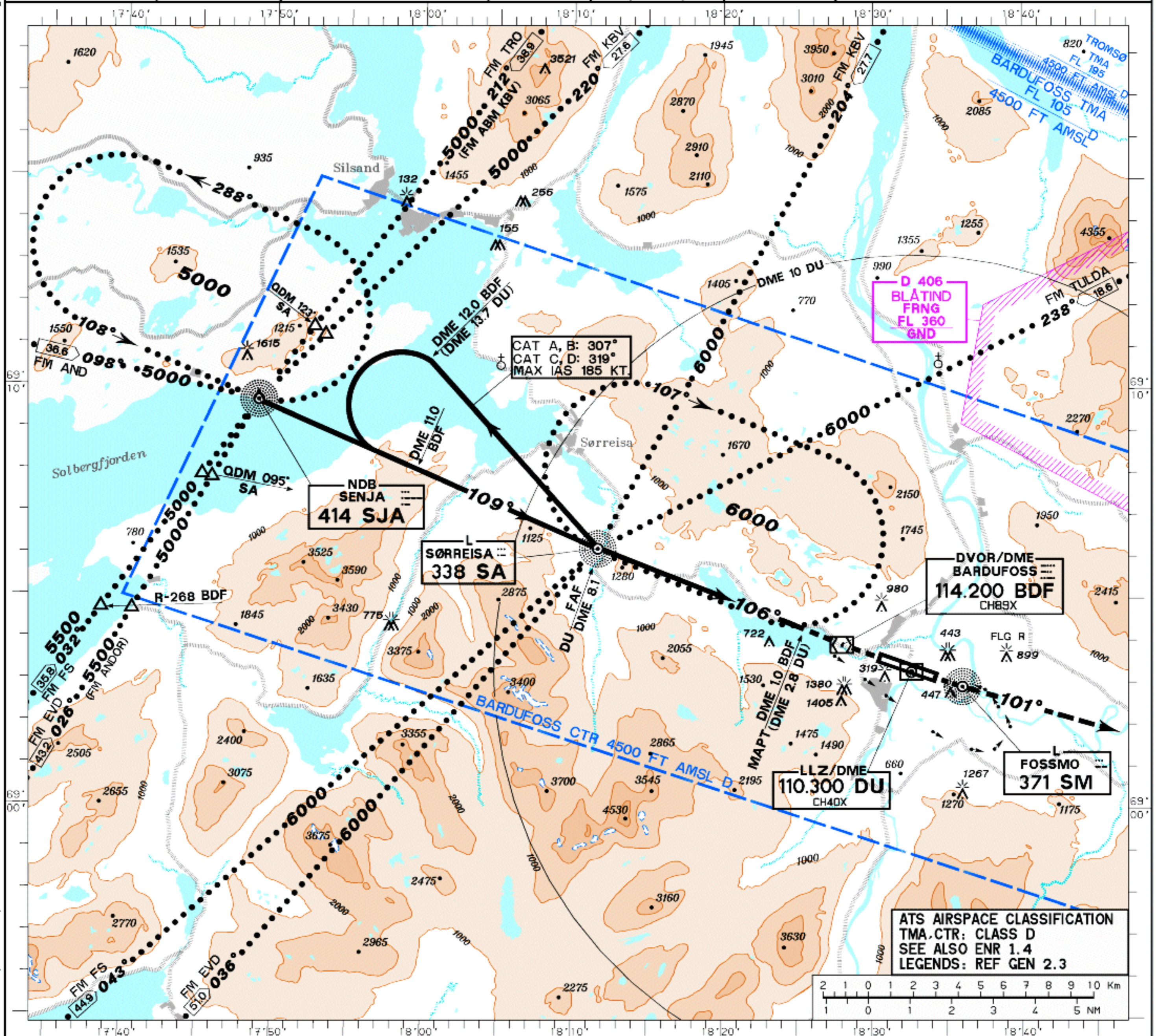


<b>INSTRUMENT APPROACH CHART-ICAO 1:275000</b> 	HGT RELATED TO THR 10 ELEV 252 FT. CIRCLING HGT RELATED TO AD ELEV 252 FT. ALTITUDE, ELEVATION AND HGT IN FT. BEARINGS ARE MAG.	TWR 118.100 122.100	APP/TAR 118.800 125.850	VDF 118.800 ATIS 129.725	<b>BARDUFLOSS NORWAY</b> <b>NDB+DME-10</b>
		TA 7000	VAR 5° E (2005)		



CAT OF ACFT		A	B	C	D	FINAL APPROACH DISTANCE FM FAF TO MAPT: 5.3 NM - TIMING NOT AUTHORIZED.					
OCA (H)	STRAIGHT-IN	1640 (1390)				SPEED	60	90	120	150	180
						TIME	5:12	3:28	2:36	2:04	1:44
CIRCLING		1670 (1420)	1760 (1510)	2570 (2320)	3940 (3690)	RATE OF DESCENT	340	510	680	850	1020
NOTE: CIRCLING S OF AD ONLY.						DIST DME BDF	6	5	4	3	2
						ALT (HGT)	3330 (3080)	3000 (2750)	2660 (2410)	2320 (2070)	1980 (1730)

CHANGES: VAR, L DU CHG TO L SM, NDB MLV CHG TO TIL, OBST, EDITORIAL.