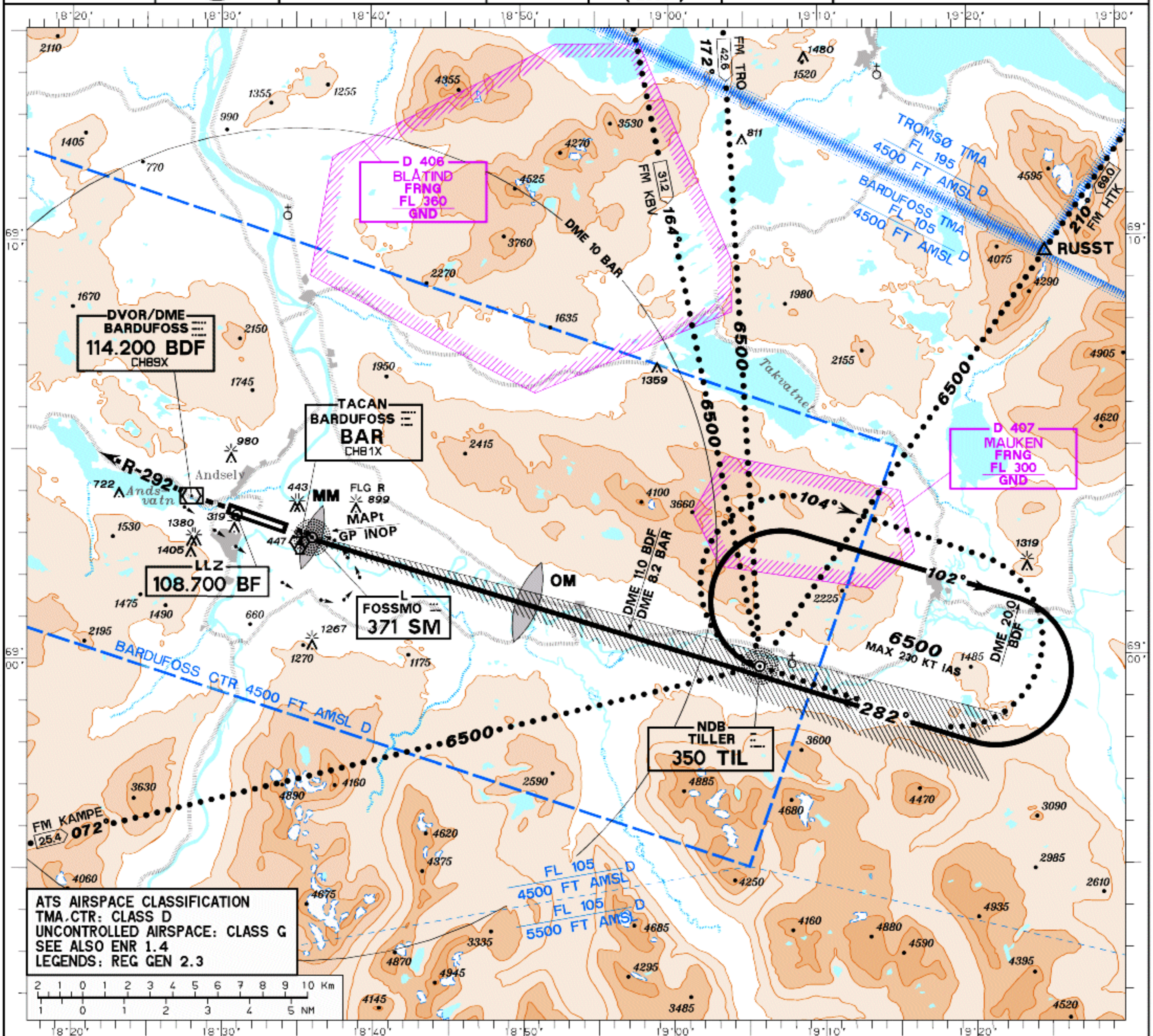
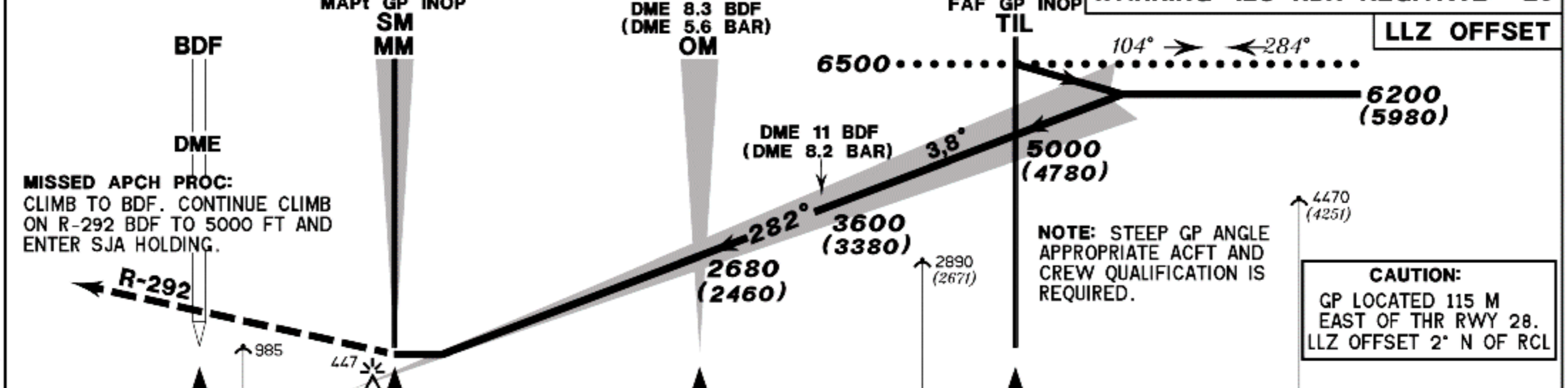


INSTRUMENT APPROACH CHART-ICAO 1:275000		HGT RELATED TO THR 28 ELEV 219 FT. CIRCLING HGT RELATED TO AD ELEV 252 FT. ALTITUDE, ELEVATION AND HGT IN FT. BEARINGS ARE MAG.	TWR 118.100 122.100	APP/TAR 118.800 125.850	VDF 118.800 ATIS 129.725	BARDUFOSS NORWAY ILS+VOR-28
			TA 7000	VAR 5° E (2005)		



KAMPE: R-222.6 BDF/DME 15.0



MISSED APCH PROC: CLIMB TO BDF. CONTINUE CLIMB ON R-292 BDF TO 5000 FT AND ENTER SJA HOLDING.					NOTE: STEEP GP ANGLE APPROPRIATE ACFT AND CREW QUALIFICATION IS REQUIRED.						
CAUTION: GP LOCATED 115 M EAST OF THR RWY 28. LLZ OFFSET 2° N OF RCL											
CAT OF ACFT					FINAL APPROACH DISTANCE FM OM TO MAPt: 5.2 NM - TIMING NOT AUTHORIZED.						
OCA (H)	CAT I	787(568)	801(582)	815(596)	829(610)	SPEED	60	90	120	150	180
	GP INOP	790(570)	810(590)	820(600)	830(610)	TIME	5:12	3:28	2:36	2:04	1:44
CIRCLING					RATE OF DESCENT						
1670(1420) 1760(1510) 2570(2320) 3940(3690)					FT/MIN 405 610 810 1010 1215						
DIST DME					ALT (HGT)						
6 5 4 3 2					2800(2580) 2400(2180) 2000(1780) 1600(1380) 1200(980)						