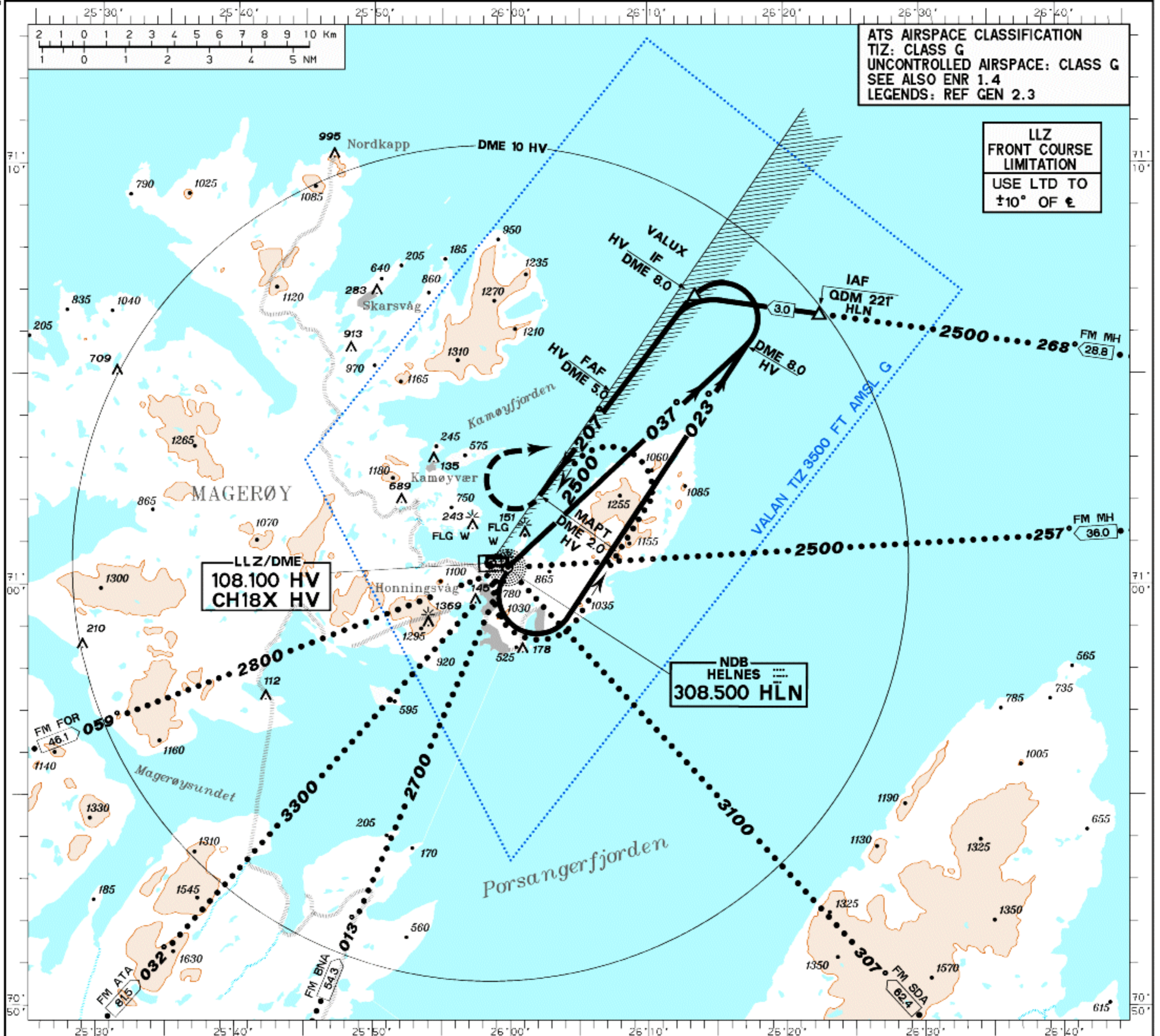


<b>INSTRUMENT APPROACH CHART-ICAO 1:275000</b>		CIRCLING HGT RELATED TO AD ELEV 44 FT. ALTITUDE, ELEVATION AND HGT IN FT. BEARINGS ARE MAG.	AFIS 119.800	APP -	VDF 119.800	<b>HONNINGSVÅG VALAN NORWAY</b>
			TA 7000	VAR 10° E (2005)	<b>LLZ+DME-207°</b> (CAT A, B) APCH TO CIRCLING	



**CAUTION:** WHEN CIRCLING BE AWARE OF HIGH GROUND CLOSE TO EXTENDED RCL TO BOTH RWYS.

**MISSED APCH PROC:** AT DME 2 HV TURN RIGHT AND CLIMB 072°. INTERCEPT AND PROCEED OUTBOUND IN LLZ-BEAM 027°. AT 2500 FT TURN BACK TO ENTER HLN AT 2500 FT.

**NOTE:** TO AVOID TRACKING OUTBOUND ON FALSE LLZ-COURSE(S), CHECK BY DF.

CAT OF ACFT	A	B	C	D	E	F	G	H	I	J	K	L	M	N
<b>FINAL APPROACH</b>	TIMING NOT AUTHORIZED FOR DEFINING MAPT.													
SPEED	KT		60	90	120	150	180							
TIME	MIN: SEC		3:00	2:00	1:30	1:12								
RATE OF DESCENT	FT/MIN		240	360	480	600								
CIRCLING			1280 (1240)	1490 (1450)										
DIST DME			5	4	3	2								
ALT (HGT)			2000	1760	1520	1280								

**NOTE:** CIRCLING NORTH OF AD ONLY.

Permisjon LE2 - 2346 Norwegian Mapping Authority

CHANGES: TIZ, EDITORIAL.