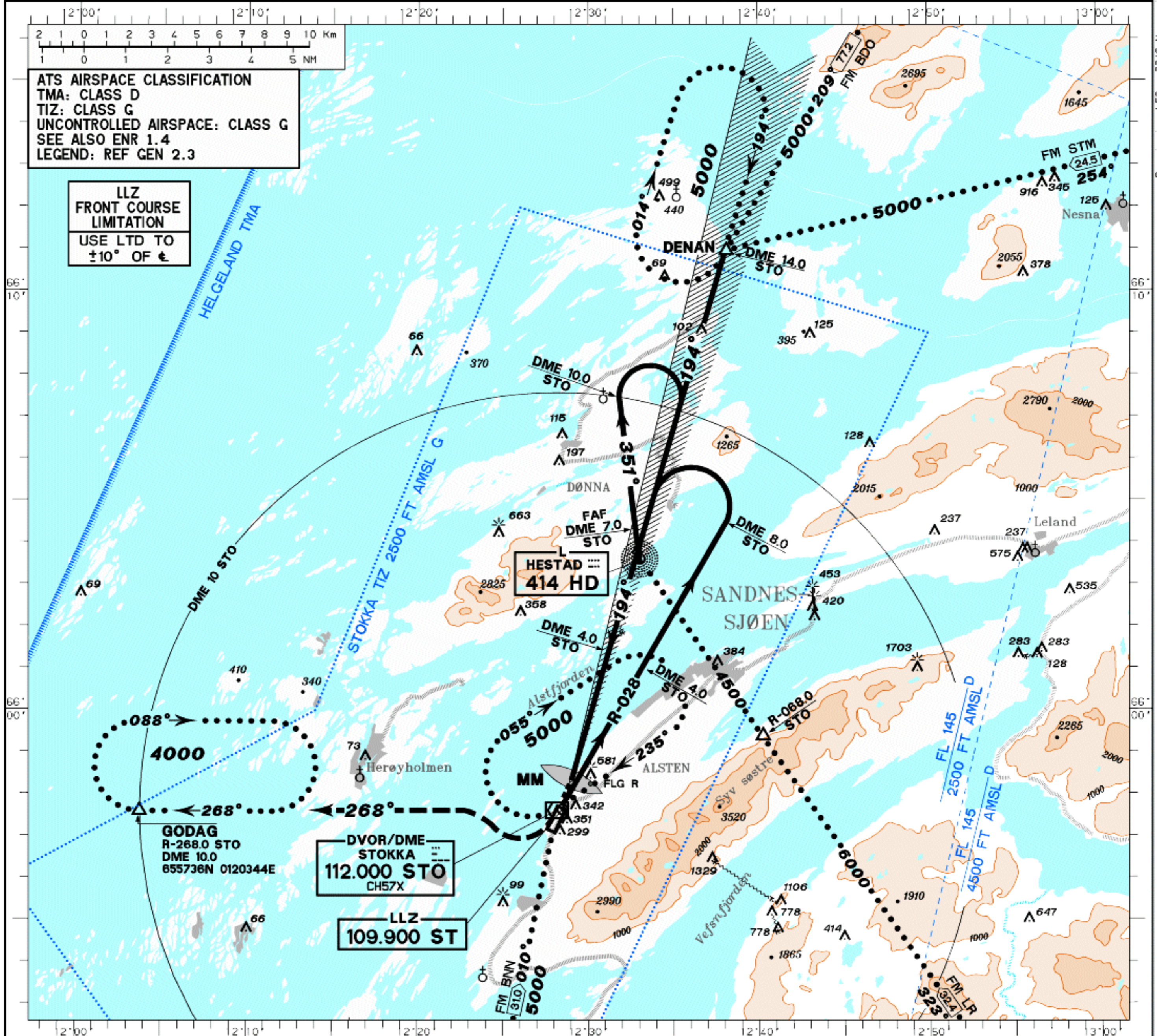


<b>INSTRUMENT APPROACH CHART-ICAO 1:275000</b>		HGT RELATED TO THR 21 ELEV 56 FT. CIRCLING HGT RELATED TO AD ELEV 56 FT. ALTITUDE, ELEVATION AND HGT IN FT. BEARINGS ARE MAG.	AFIS 120.300	APP 127.900	VDF 120.300	<b>SANDNESSJØEN STOKKA NORWAY</b> <b>LLZ+DME+MM-21</b> (CAT A, B)
			TA 7000	VAR 2° E (2005)		



**DENAN: QDR 254° STM/LLZ ST DME 14 STO**

**PROCEDURE IS OFFSET 8°**

**NO GLIDE PATH**

**MISSED APCH PROC: TURN RIGHT, CLIMB ON R-268 STO TO GODAG HOLDING, AND HOLD AT 4000 FT.**

**WHEN MM U/S: DME 1 STO MAY BE USED AS MAPt/TP.**

	NM	6	5	4	3	2	1	0	1	2	3	4	5	6	7	8	9	10	11	12	13	14	15	16	17	18	19	20	
CAT OF ACFT																													
OCA (H)	STRAIGHT-IN		540 (490)	540 (490)																									
	CIRCLING		540 (490)	670 (620)																									
<b>NOTE: CIRCLING W OF AD ONLY.</b>																													

<b>FINAL APPROACH</b>		DISTANCE FM FAF TO MAPt: 6.3 NM - TIMING NOT AUTHORIZED.				
SPEED	KT	60	90	120	150	180
TIME	MIN: SEC	6:18	4:12	3:09	2:31	2:06
RATE OF DESCENT	FT/MIN	405	610	810	1010	1215
DIST DME		6	5	4	3	2
ALT (HGT)		2500 (2450)	2100 (2050)	1700 (1650)	1300 (1250)	900 (850)