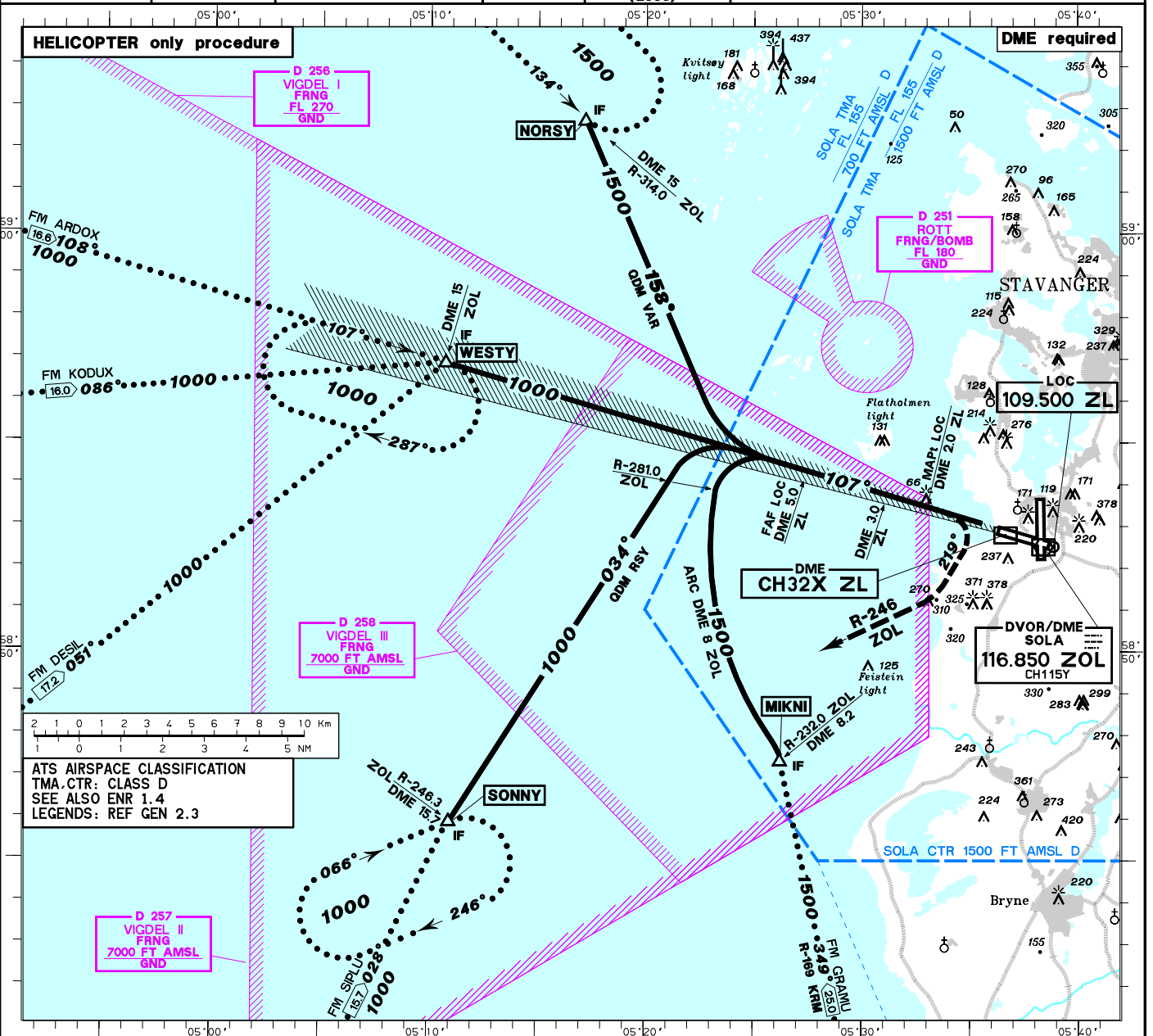


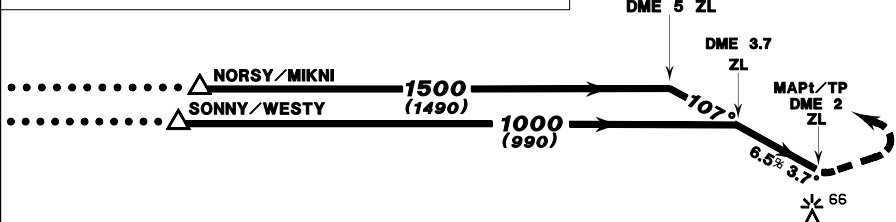
INSTRUMENT APPROACH CHART-ICAO 1:275000	MNM SECT ALT 	HGT RELATED TO THR 11 ELEV 7 FT. AD ELEV 29 FT. ALTITUDE, ELEVATION AND HGT IN FT. BEARINGS ARE MAG.	TWR 118.350 122.100 GND 121.750	APP/TAR 119.600 119.400 118.500 122.100	VDF ALL FREQ	ATIS 126.000	STAVANGER SOLA NORWAY LOC x RWY 11
			TA 7000	VAR 1° W (2005)			



NOTE:
 APPROACH TO RWY 11 AFTER PASSING MAPt SHALL FOLLOW PAPI RWY 11. LANDING SHALL BE EXECUTED WEST OF TWY H. DISCONTINUATION OF APPROACH AFTER PASSING MAPt SHALL BE EXECUTED WEST OF THR RWY 11 WITH VISUAL REFERENCE TO THE TERRAIN. AND IN ACCORDANCE WITH CLEARANCES ISSUED BY SOLA TWR.
 (Ref AIP AD 2 ENZV 2-1 and ENZV AD 2.22).

NOTE: DESCEND GRADIENT CALCULATED FM FAF TO MAPt.

MISSED APCH PROC:
 IMMEDIATE RIGHT TURN TO 219° TO INTERCEPT R-246 ZOL. CLIMB AND JOIN SONNY HLDG PATTERN AT 1000 FT.



CHANGES: FAF, MAPt, EDITORIAL.

CAT OF ACFT NM 16 15 14 13 12 11 10 9 8 7 6 5 4 3 2 1 0 1 2 3 4 5 6 7 8 NM	OCA (H) H 320(310)	FINAL APPROACH DIST FM FAF TO MAPt 3.0 NM - TIMING NOT AUTHORIZED	SPEED KT 60 90 120 150 180			
			TIME MIN:SEC 3:00 2:00 - - -			
STRAIGHT-IN	CIRCLING	RATE OF DESCENT FT/MIN 400 600 - - -	DIST DME 4 3 2 - - -			
			ALT (HGT) 1100(1090) 710(700) 320(310) - - -			

NOTE: VISUAL MANEUVRING W OF RWY 18 - 36